

# HydroWhirl® Mini



(HWM) Stainless Steel Reactionary Force



## DESIGN FEATURES

- Fluid-driven, self-flushing
- Durable compact design, maintenance-free
- Made from FDA-compliant, 316L material
- Suitable for food applications
- PEEK slide-bearing for greater longevity

## SPRAY CHARACTERISTICS

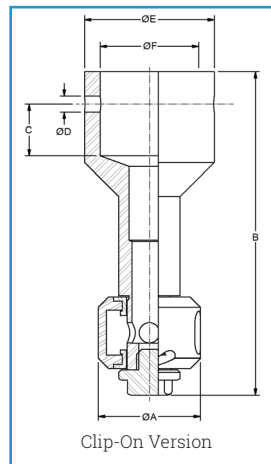
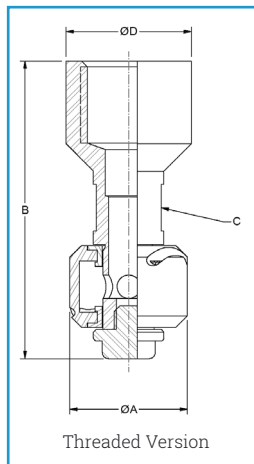
- Vigorous spray action

**Spray Angles:** Complete 360° spray coverage

**Flow Rates:** 3.6 to 9.2 GPM

**Max Temperature:** 266°F/130°C

**Filtration:** Line strainer with a mesh size of 0.012 in/50 mesh



## DIMENSIONS IN INCHES (CLIP-ON)

Tube Size	A	B	C	D	E	F	Weight (oz)	Min. Entry Dia
3/4"	0.81	2.50	0.38	0.10	1.00	0.75	1.8	1.25

## DIMENSIONS IN INCHES (THREADED)

Pipe Size	A	B	C	D	Weight (oz)
3/8"	0.81	2.00	0.44	0.70	2.6

## HYDROWHIRL® MINI FLOW RATES

Materials: 316L Stainless Steel Body, PEEK Slide-Bearing

Female Connection Type	Nozzle Number	Spray Angles	Flow Rate (GPM) @ Differential Pressure (psi)						Maximum Free Passage	Coverage Dia @ 40 psi
			10	20	30	40	50	60		
			psi	psi	psi	psi	psi	psi	in	ft
3/8" FNPT 3/4" Tube Clip-On	HWM-7.5	360°	3.64	5.22	6.45	7.50	8.43	9.27	0.06	6

Flow rates represent threaded connections with a 360° spray angle.

TANK CLEANING