

TC

High Flow Rate/Metal Alloy

DESIGN FEATURES

- One-piece body with integral vanes
- Male, female and flanged connections available

SPRAY CHARACTERISTICS

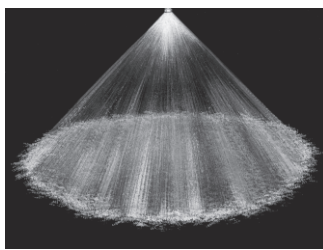
- Extremely high flow rates
- Spray pattern:** Uniform Full Cone
- Spray angles:** 60°, 90°, and 120°
- Flow rates:** 217 to 8730 gpm (Special flow rates available)



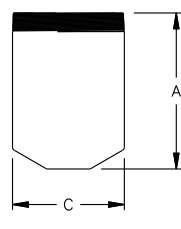
Flanged



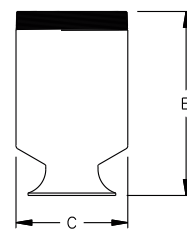
FULL CONE



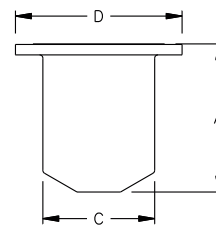
Full Cone 90° (M)



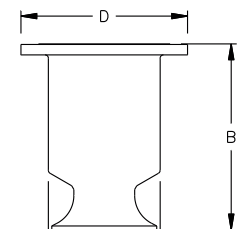
Male 60°/90°



Male 120°



60°/90° Flanged



120° Flanged

Dimensions are approximate. Check with BETE for critical dimension applications.

TC Flow Rates and Dimensions

Full Cone, Narrow 60° (N), Medium 90°(M) and Wide 120°(W) Spray Angles, 6" to 12" Pipe Sizes

Male or Female Pipe Size	Available Spray Angles	Nozzle Number	K Factor	GALLONS PER MINUTE @ PSI											Approx. Free Pass. Dia. (in.)	Dimensions (in.)				Wt. (lbs.)
				1 PSI	3 PSI	5 PSI	7 PSI	10 PSI	15 PSI	20 PSI	30 PSI	40 PSI	60 PSI	60°		90°	120°	C	D	
6	60° 90° 120°	TC 532	217	217	360	456	532	627	755	862	1040	1190	1430	1.75	10.2	6.60			25	
	90° 120°	TC 588	240	240	398	504	588	693	835	953	1150	1310	1580		10.2	6.60			25	
	90° 120°	TC 827	338	338	560	708	827	974	1170	1340	1610	1840	2220		7.8	12.3	6.60		25	
8	60° 90° 120°	TC 962	393	393	651	824	962	1130	1370	1560	1880	2140	2580	2.06	12.8	8.60			40	
	90° 120°	TC 1120	458	458	758	959	1120	1320	1590	1810	2190	2500	3010		12.8	15.3	8.60		40	
	60° 90° 120°	TC 1260	515	515	853	1080	1260	1480	1790	2040	2460	2810	3380		12.8	15.3	8.60		40	
	90° 120°	TC 1480	605	605	1000	1270	1480	1740	2100	2400	2890	3300	3980			15.3	8.60		40	
Flanged Connection																				
6	60° 90° 120°	TCFL532	217	217	360	456	532	627	755	862	1040	1190	1430	1.75	9.4	6.60			60	
	90° 120°	TCFL588	240	240	398	504	588	693	835	953	1150	1310	1580		9.4	6.60	11.0			
	90° 120°	TCFL827	338	338	560	708	827	974	1170	1340	1610	1840	2220		9.4	11.5	6.60			
8	60° 90° 120°	TCFL962	393	393	651	824	962	1130	1370	1560	1880	2140	2580	2.06	11.9	8.60			85	
	90° 120°	TCFL1120	458	458	758	959	1120	1320	1590	1810	2190	2500	3010		11.9	14.7	8.60	14.0		
	60° 90° 120°	TCFL1260	515	515	853	1080	1260	1480	1790	2040	2460	2810	3380		11.9	14.7	8.60			
	90° 120°	TCFL1480	605	605	1000	1270	1480	1740	2100	2400	2890	3300	3980		11.9	14.7	8.60			
12	60° 90°	TCFL2070	846	846	1400	1770	2070	2440	2940	3350	4040	4610	5560	2.25	17.0	12.7			160	
	90°	TCFL2360	960	960	1590	2010	2360	2770	3340	3810	4590	5240	6310		17.0	12.7				
	90° 120°	TCFL2510	1025	1030	1700	2150	2510	2960	3560	4070	4900	5600	6740		17.0	21.4	12.7	19.0		
	90° 120°	TCFL2660	1087	1090	1800	2280	2660	3130	3780	4310	5190	5930	7150		17.0	21.4	12.7			
	90° 120°	TCFL2960	1209	1210	2000	2540	2960	3490	4200	4800	5780	6600	7950		17.0	21.4	12.7			
	90°	TCFL3250	1328	1330	2200	2780	3250	3830	4610	5270	6350	7250	8730	17.0	12.7					

$$\text{Flow Rate (GPM)} = K (\text{PSI})^{0.46}$$

Standard Materials: 316 Stainless Steel

Spray angle performance varies with pressure. Contact BETE for specific data on critical applications.

www.BETE.com

Call for the name of your nearest BETE representative.

CALL 413-772-0846