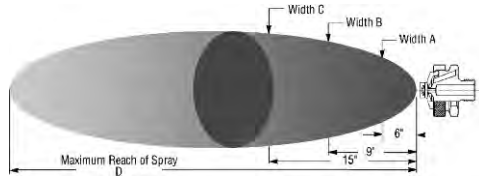


X A E R

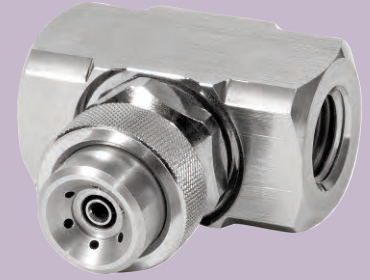
Pressure-fed/Ext. Mix/Narrow Angle Round

DESIGN/SPRAY CHARACTERISTICS

- External mix: allows spraying of viscous liquids
- Variable atomization
- Narrow spray angle (10°- 30°)
- Precise metering of liquid flow rate



Dimensions are approximate. Check with BETE for critical dimension applications.



1/4" XAER850A
XA 00 Body; A Hardware

XA ER Set-up Flow Rates and Spray Dimensions Pressure-fed, External Mix, Narrow Round Spray Pattern, 1/8" and 1/4" Pipe Sizes

Pipe Size	Spray Set-up Number	Fluid and Air Cap Numbers	3 PSI Liquid			5 PSI Liquid			10 PSI Liquid			20 PSI Liquid			40 PSI Liquid			Spray Dimensions								
			PSI air	GPH	SCFM	PSI air	GPH	SCFM	PSI air	GPH	SCFM	PSI air	GPH	SCFM	PSI air	GPH	SCFM	PSI Liquid	Air	A in	B in	C in	D ft			
1/8"	ER 050	Fluid Cap	5		0.8	5		0.8	10		0.8	10		1.2	20		1.8	20		3	10	2	3	4	5	8
		FC7 & Air Cap	10	0.7	1.2	10	0.8	1.2	20	1.2	1.8	30	1.7	2.3	40	2.4	2.9	50	4.0	20	20	3	2	3	14	
		AC1801	20		1.8	20	1.8	1.8	30	2.3	2.9	40	2.9	3.5	60	4.0	4.7	70	4.7	20	40	2	3	4	18	
	ER 150	Fluid Cap	5		0.8	5		0.8	10		1.2	20		1.8	20		1.8	20		3	10	2	3	3	3	10
		FC4 & Air Cap	10	1.0	1.2	20	1.3	1.8	30	2.0	2.3	40	2.7	2.9	50	4.0	2.9	50	3.5	10	40	2	3	3	5	16
		AC1801	20		1.8	30	2.3	2.9	40	3.5	4.0	50	4.7	4.7	70	5.9	4.7	70	4.7	20	40	3	4	4	4	18
	ER 250	Fluid Cap	6		0.9	10		1.2	10		1.2	20		1.8	20		1.8	20		3	10	3	4	4	4	10
		FC3 & Air Cap	10	2.0	1.2	20	2.7	1.8	20	4.0	1.8	30	4.5	2.3	50	6.0	2.9	60	3.5	5	20	3	3	3	5	14
		AC1801	20		1.8	30	2.3	2.9	40	3.5	2.9	50	4.5	2.9	50	3.5	4.7	70	4.7	10	40	3	4	4	5	17
	ER 350	Fluid Cap	10		3.4	10		3.4	20		5.5	20		7.2	30		7.2	30		3	10	3	5	6	6	9
		FC6 & Air Cap	15	3.3	4.5	20	4.1	5.5	30	5.7	7.2	40	8.3	8.9	60	11.9	10.6	50	10.6	5	40	3	4	6	6	11
		AC1802	20		5.5	30	7.2	8.9	40	10.6	10.6	50	12.2	8.9	60	13.9	12.2	70	13.9	10	40	3	4	6	6	16
ER 450	Fluid Cap	10		3.4	10		3.4	15		4.5	30		7.2	50		7.2	50		3	10	4	6	9	14		
	FC2 & Air Cap	15	5.0	4.5	15	6.4	4.5	20	8.8	5.5	30	13	8.9	60	18	10.6	40	10.6	5	40	4	5	6	21		
	AC1802	20		5.5	20	7.2	7.2	40	10.6	10.6	50	13.9	8.9	50	15.6	13.9	70	13.9	20	30	5	5	6	20		
ER 550	Fluid Cap	15		4.5	20		5.5	30		7.2	40		8.9	40		8.9	40		3	20	6	6	9	16		
	FC1 & Air Cap	20	10	5.5	30	13	7.2	50	18	10.6	60	25	10.6	60	30	10.6	50	10.6	5	40	5	7	7	21		
	AC1802	30		7.2	40	8.9	8.9	60	12.2	13.9	70	15.6	13.9	70	15.6	13.9	80	15.6	10	60	6	6	10	22		
ER 650	Fluid Cap	15		7.2	20		8.8	30		11.7	50		17.2	50		17.2	50		3	20	6	6	8	17		
	FC8 & Air Cap	20	10	8.8	25	13	10.3	40	18	11.7	50	25	12.2	60	25	18.5	55	18.5	5	30	6	6	6	22		
	AC1803	25		10.3	30	13	11.7	50	18	17.2	60	25	19.8	70	25.2	21.1	65	21.1	10	60	5	6	7	22		
ER 750	Fluid Cap	20		8.8	30		11.7	40		14.5	50		17.2	50		17.2	50		3	20	6	6	9	19		
	FC9 & Air Cap	30	17	11.7	40	20	14.5	50	29	17.2	60	42	19.8	60	42	18.5	65	18.5	5	30	6	6	8	21		
	AC1803	40		14.5	50	20	17.2	60	29	19.8	70	42	21.1	70	22.5	21.1	70	22.5	10	60	5	5	7	22		
ER 850	Fluid Cap	40		14.5	55		17.2	65		21.1	80		25.2	80		25.2	80		3	40	6	6	7	22		
	FC5 & Air Cap	50	25	17.2	60	29	19.8	70	42	22.5	80	61	25.2	90	27.9	25.2	90	27.9	10	80	4	5	7	18		
	AC1803	55		18.5	65	21.1	21.1	80	25.2	21.1	90	27.9	25.2	90	27.9	25.2	90	27.9	10	90	3	4	6	18		
				19.8	70		22.5	90		22.5	90		25.2	90		25.2	90		20	80	4	4	6	18		
				21.1	80		25.2	90		25.2	90		27.9	90		27.9	90		20	90	3	4	6	19		

Standard Materials: Nickel Plated Brass, 303 Stainless Steel, and 316 Stainless Steel.

Spray angle performance varies with pressure. Contact BETE for specific data on critical applications.

AIR ATOMIZING

TO ORDER: specify pipe size, body style, spray set-up #, hardware and mounting assemblies, and material. See page 74.