

WTZ

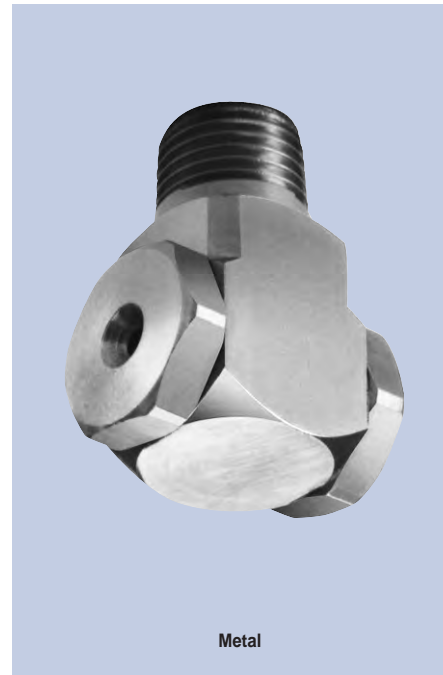
Right Angle Full Cone

DESIGN FEATURES

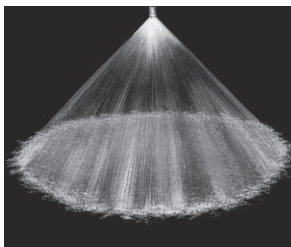
- No internal parts, clog-resistant
- Uniform distribution
- Male and female connections
- Large free passage

SPRAY CHARACTERISTICS

Spray pattern: Full Cone
Spray angle: 90° and 110°
Flow rates: 0.18 to 49 gpm



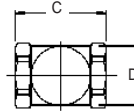
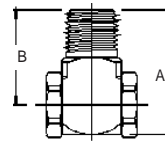
Metal



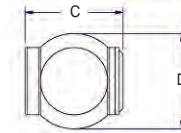
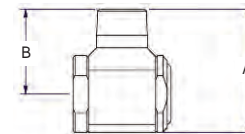
Full Cone 90°



Full Cone 110°



Metal



3/4" and 1"

Spray angle performance varies with pressure.

Contact BETE for specific data on critical applications.

Dimensions are approximate.
 Check with BETE for critical dimension applications.

WTZ Flow Rates and Dimensions

Full Cone, 90° and 110° Spray Angles, 1/4", 3/8", 1/2", 3/4", and 1" Pipe Size

Male or Female Pipe Size	Nozzle Number	K Factor	GALLONS PER MINUTE @ PSI									Approx. Orifice Dia. (in)	Dimensions (in.) Metal Only			
			5 PSI	10 PSI	15 PSI	20 PSI	30 PSI	40 PSI	60 PSI	80 PSI	100 PSI		A	B	C	D
1/4"	WTZ 50	0.079	0.18	0.25	0.30	0.35	0.43	0.50	0.61	0.70	0.79	0.075	1.31	1.00	0.80	0.63
	WTZ 56	0.088	0.20	0.28	0.34	0.39	0.48	0.56	0.68	0.79	0.88	0.079				
	WTZ 62	0.098	0.22	0.31	0.38	0.44	0.54	0.62	0.76	0.88	0.98	0.083				
	WTZ 77	0.122	0.27	0.39	0.47	0.55	0.67	0.77	0.95	1.10	1.22	0.091				
3/8"	WTZ 98	0.155	0.35	0.49	0.60	0.69	0.85	0.98	1.20	1.38	1.55	0.102	1.50	1.12	1.17	0.75
	WTZ 120	0.196	0.44	0.62	0.76	0.88	1.07	1.24	1.52	1.75	1.96	0.118				
	WTZ 150	0.245	0.55	0.77	0.95	1.10	1.34	1.55	1.90	2.19	2.45	0.130				
	WTZ 170	0.275	0.61	0.87	1.06	1.23	1.50	1.74	2.13	2.46	2.75	0.138				
	WTZ 200	0.309	0.69	0.98	1.20	1.38	1.69	1.95	2.39	2.76	3.09	0.146				
	WTZ 250	0.392	0.88	1.24	1.52	1.75	2.15	2.48	3.04	3.51	3.92	0.163				
	WTZ 280	0.441	0.99	1.39	1.71	1.97	2.42	2.79	3.42	3.95	4.41	0.173				
	WTZ 310	0.490	1.10	1.55	1.90	2.19	2.69	3.10	3.80	4.39	4.90	0.183				
WTZ 390	0.613	1.37	1.94	2.37	2.74	3.36	3.88	4.75	5.48	6.13	0.205					
WTZ 500	0.785	1.75	2.48	3.04	3.51	4.30	4.96	6.08	7.02	7.85	0.228					
1/2"	WTZ 620	0.98	2.19	3.10	3.80	4.38	5.37	6.20	7.59	8.77	9.80	0.287	1.87	1.38	1.48	1.00
	WTZ 780	1.23	2.74	3.88	4.75	5.48	6.71	7.75	9.49	11.0	12.3	0.315				
	WTZ 980	1.54	3.45	4.88	5.98	6.91	8.46	9.77	12.0	13.8	15.4	0.343				
	WTZ 1120**	1.77	3.96	5.60	6.86	7.92	9.70	11.2	13.7	15.8	17.7	0.389				
	WTZ 1280**	2.02	4.53	6.40	7.84	9.05	11.1	12.8	15.7	18.1	20.2	0.420				
WTZ 1440**	2.28	5.09	7.20	8.82	10.2	12.5	14.4	17.6	20.4	22.8	0.391					
3/4" *	WTZ 1200	1.90	4.24	6.00	7.35	8.49	10.4	12.0	14.7	17.0	19.0	0.335	3.00	2.00	2.00	2.00
	WTZ 1500	2.37	5.30	7.50	9.19	10.6	13.0	15.0	18.4	21.2	23.7	0.412				
	WTZ 1900	3.00	6.72	9.50	11.6	13.4	16.5	19.0	23.3	26.9	30.0	0.469				
1" *	WTZ 2200	3.48	7.78	11.0	13.5	15.6	19.1	22.0	26.9	31.1	34.8	0.500	3.20	2.20	2.55	2.48
	WTZ 3100	4.90	11.0	15.5	19.0	21.9	26.9	31.0	38.0	43.8	49.0	0.531				

$$\text{Flow Rate (GPM)} = K \sqrt{\text{PSI}}$$

Standard Materials: Brass, PVC, 303 Stainless Steel and 316 Stainless Steel.

*Male connection standard; female connection available by special order.

**90° Spray Angle ONLY; other angles available on request.

