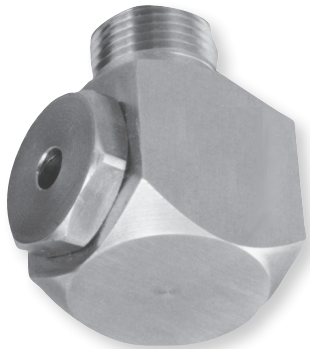




Extended Life/Hollow Cone



DESIGN FEATURES

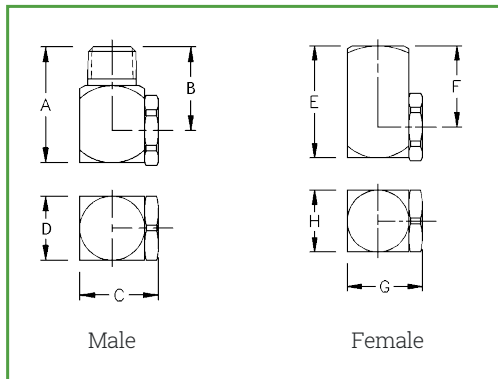
- Tangential whirl
- Oversized body for extended life
- Male and female connections
- Large free passage

SPRAY CHARACTERISTICS

Spray angles: 70° to 140°

Flow rates: 0.123 to 2.89 L/min

HOLLOW CONE



Male or Female Pipe Size	Dimensions (mm) for Metals Only							
	A	B	C	D	E	F	G	H
1/8"	28.4	22.4	22.4	19.1	25.4	19.1	22.4	19.1
1/4"	33.3	25.4	22.4	19.1	33.3	25.4	22.4	19.1
3/8"	38.1	28.4	26.9	22.2	34.0	25.4	24.6	22.2
1/2"	47.5	34.8	38.1	31.8	47.8	35.1	38.1	31.8
3/4"	57.2	41.1	44.5	38.1	55.6	39.6	44.5	38.1

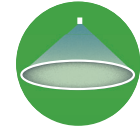
WTX FLOW RATES & DIMENSIONS

Materials: Brass, 303 Stainless Steel, 316 Stainless Steel.

Pipe Size	Nozzle Number	Spray Angle	K Factor	Flow Rate (LPM) @ Differential Pressure (bar)								Approx. (mm)		Wt. (g)	
				0.3	0.5	0.7	1	2	3	5	7	Inlet Dia	Orifice Dia		
				bar	bar	bar	bar	bar	bar	bar	bar				
1/8"	WTX10	70°	110°	0.228	0.123	0.161	0.191	0.228	0.322	0.395	0.510	0.603	1.02	1.17	32
	WTX20	70°	115°	0.456	0.250	0.322	0.381	0.456	0.645	0.789	1.02	1.21	1.52	1.52	
	WTX40	70°		0.912	0.499	0.645	0.763	0.912	1.29	1.58	2.04	2.41	2.29	2.29	
	WTX50		115°	1.14	0.624	0.806	0.953	1.14	1.61	1.97	2.55	3.01	2.29	2.29	
	WTX60	70°	115°	1.37	0.749	0.967	1.14	1.37	1.93	2.37	3.06	3.62	2.54	2.79	
	WTX70		115°	1.60	0.874	1.13	1.33	1.60	2.26	2.76	3.57	4.22	2.54	2.79	
	WTX80		120°	1.82	0.999	1.29	1.53	1.82	2.58	3.16	4.08	4.82	2.79	3.05	
	WTX100	70°	115°	2.28	1.25	1.61	1.91	2.28	3.22	3.95	5.10	6.03	3.30	3.30	
	WTX130		120°	2.96	1.62	2.09	2.48	2.96	4.19	5.13	6.62	7.84	3.56	3.56	
	WTX160	70°		3.65	2.00	2.58	3.05	3.65	5.16	6.32	8.15	9.65	3.81	4.06	
1/4"	WTX180		120°	4.10	2.25	2.90	3.43	4.10	5.80	7.10	9.17	10.9	4.32	4.06	
	WTX200	70°		4.56	2.50	3.22	3.81	4.56	6.45	7.89	10.2	12.1	4.32	4.83	
	WTX12		80°	0.273	0.150	0.193	0.229	0.273	0.387	0.474	0.611	0.724	1.02	1.27	74
	WTX18		80°	0.410	0.225	0.290	0.343	0.410	0.580	0.710	0.917	1.09	1.52	1.52	
	WTX20	70°	110°	0.456	0.250	0.322	0.381	0.456	0.645	0.789	1.02	1.21	1.52	1.52	
	WTX27		80°	0.615	0.337	0.435	0.515	0.615	0.870	1.07	1.38	1.63	1.78	2.03	
	WTX35		100°	0.798	0.437	0.564	0.667	0.798	1.13	1.38	1.78	2.11	2.03	2.29	
	WTX40	70°	80°	0.912	0.499	0.645	0.763	0.912	1.29	1.58	2.04	2.41	2.03	2.29	
WTX42		120°	0.957	0.524	0.677	0.801	0.957	1.35	1.66	2.14	2.53	2.03	2.29		
WTX48		105°	1.09	0.599	0.773	0.915	1.09	1.55	1.89	2.45	2.89	2.29	2.79		

Flow Rate (LPM) = $K \sqrt{PST}$

Spray angle performance varies with pressure. Contact BETE for specific data on critical applications.



WTX FLOW RATES & DIMENSIONS

Materials: Brass, 303 Stainless Steel, 316 Stainless Steel.

Pipe Size	Nozzle Number	Spray Angle		K Factor	Flow Rate (LPM) @ Differential Pressure (bar)							Approx. (mm)		Wt. (g) Metal	
					0.3	0.5	0.7	1	2	3	5	7	Inlet Dia		Orifice Dia
					bar	bar	bar	bar	bar	bar	bar	bar			
1/4"	WTX53		80°	1.21	0.662	0.854	1.01	1.21	1.71	2.09	2.70	3.20	2.29	2.79	74
	WTX60	70°		1.37	0.749	0.967	1.14	1.37	1.93	2.37	3.06	3.62	2.54	2.79	
	WTX68		120°	1.55	0.849	1.10	1.30	1.55	2.19	2.68	3.47	4.10	2.54	3.30	
	WTX80		120°	1.82	0.999	1.29	1.53	1.82	2.58	3.16	4.08	4.82	3.30	3.30	
	WTX100	70°	115°	2.28	1.25	1.61	1.91	2.28	3.22	3.95	5.10	6.03	3.30	3.56	
	WTX130		120°	2.96	1.62	2.09	2.48	2.96	4.19	5.13	6.62	7.84	3.81	4.06	
	WTX150		120°	3.42	1.87	2.42	2.86	3.42	4.83	5.92	7.64	9.04	4.06	4.32	
	WTX160	70°		3.65	2.00	2.58	3.05	3.65	5.16	6.32	8.15	9.65	4.06	4.32	
	WTX180		120°	4.10	2.25	2.90	3.43	4.10	5.80	7.10	9.17	10.9	4.57	4.57	
	WTX200	70°	120°	4.56	2.50	3.22	3.81	4.56	6.45	7.89	10.19	12.1	4.57	4.83	
	WTX220		120°	5.01	2.75	3.55	4.19	5.01	7.09	8.68	11.2	13.3	4.57	5.59	
	WTX240		120°	5.47	3.00	3.87	4.58	5.47	7.73	9.47	12.2	14.5	5.08	5.08	
	WTX260		80°	5.93	3.25	4.19	4.96	5.93	8.38	10.3	13.2	15.7	5.08	5.08	
	WTX280		80°	6.38	3.49	4.51	5.34	6.38	9.02	11.1	14.3	16.9	5.08	5.59	
	WTX300	70°	100°	6.84	3.74	4.83	5.72	6.84	9.67	11.8	15.3	18.1	5.08	5.59	
	WTX340		80°	7.75	4.24	5.48	6.48	7.75	11.0	13.4	17.3	20.5	5.59	6.10	
WTX400		80°	9.12	4.99	6.45	7.63	9.12	12.9	15.8	20.4	24.1	6.35	7.11		
WTX480		80°	10.9	5.99	7.73	9.15	10.9	15.5	18.9	24.5	28.9	6.35	6.86		
WTX580		80°	13.2	7.24	9.35	11.1	13.2	18.7	22.9	29.6	35.0	6.86	7.62		
WTX640		80°	14.6	7.99	10.3	12.2	14.6	20.6	25.3	32.6	38.6	6.86	7.62		
WTX680		80°	15.5	8.49	11.0	13.0	15.5	21.9	26.8	34.7	41.0	6.86	8.64		
3/8"	WTX100	70°	115°	2.28	1.25	1.61	1.91	2.28	3.22	3.95	5.10	6.03	3.56	3.81	99
	WTX130	70°		2.96	1.62	2.09	2.48	2.96	4.19	5.13	6.62	7.84	3.56	4.57	
	WTX150		120°	3.42	1.87	2.42	2.86	3.42	4.83	5.92	7.64	9.04	4.32	4.57	
	WTX160		120°	3.65	2.00	2.58	3.05	3.65	5.16	6.32	8.15	9.65	4.32	4.57	
	WTX180	70°		4.10	2.25	2.90	3.43	4.10	5.80	7.10	9.17	10.9	4.32	4.83	
	WTX200		120°	4.56	2.50	3.22	3.81	4.56	6.45	7.89	10.2	12.1	4.83	5.08	
	WTX220	70°	115°	5.01	2.75	3.55	4.19	5.01	7.09	8.68	11.2	13.3	4.83	5.08	
	WTX240		120°	5.47	3.00	3.87	4.58	5.47	7.73	9.47	12.2	14.5	4.83	5.08	
	WTX260		120°	5.93	3.25	4.19	4.96	5.93	8.38	10.3	13.2	15.7	4.83	5.84	
	WTX270		120°	6.15	3.37	4.35	5.15	6.15	8.70	10.7	13.8	16.3	5.08	5.84	
	WTX300		120°	6.84	3.74	4.83	5.72	6.84	9.67	11.8	15.3	18.1	5.08	5.84	
	WTX350	70°	115°	7.98	4.37	5.64	6.67	7.98	11.3	13.8	17.8	21.1	6.10	6.35	
	WTX400		115°	9.12	4.99	6.45	7.63	9.12	12.9	15.8	20.4	24.1	6.10	6.86	
	WTX440	70°	105°	10.0	5.49	7.09	8.39	10.0	14.2	17.4	22.4	26.5	6.60	7.62	
	WTX500		105°	11.4	6.24	8.06	9.53	11.4	16.1	19.7	25.5	30.1	6.60	7.11	
	WTX560	70°	105°	12.8	6.99	9.02	10.7	12.8	18.0	22.1	28.5	33.8	6.60	7.87	
WTX600		105°	13.7	7.49	9.67	11.4	13.7	19.3	23.7	30.6	36.2	7.87	7.87		
WTX800	70°		18.2	9.99	12.9	15.3	18.2	25.8	31.6	40.8	48.2	6.86	8.64		
WTX1000	70°		22.8	12.5	16.1	19.1	22.8	32.2	39.5	51.0	60.3	8.64	9.65		
1/2"	WTX500	70°		11.4	6.24	8.06	9.53	11.4	16.1	19.7	25.5	30.1	7.62	7.62	320
	WTX600	70°		13.7	7.49	9.67	11.4	13.7	19.3	23.7	30.6	36.2	8.38	7.87	
	WTX800	70°		18.2	9.99	12.9	15.3	18.2	25.8	31.6	40.8	48.2	9.14	9.14	
	WTX1000	70°		22.8	12.5	16.1	19.1	22.8	32.2	39.5	51.0	60.3	9.14	11.2	
	WTX1200	70°	110°	27.3	15.0	19.3	22.9	27.3	38.7	47.4	61.1	72.4	10.2	12.2	
3/4"	WTX800	70°		18.2	9.99	12.9	15.3	18.2	25.8	31.6	40.8	48.2	9.14	9.50	460
	WTX1000	70°		22.8	12.5	16.1	19.1	22.8	32.2	39.5	51.0	60.3	10.2	11.2	
	WTX1200	70°		27.3	15.0	19.3	22.9	27.3	38.7	47.4	61.1	72.4	11.2	11.2	
	WTX1400	70°		31.9	17.5	22.6	26.7	31.9	45.1	55.3	71.3	84.4	11.9	12.2	
	WTX1600	80°		36.5	20.0	25.8	30.5	36.5	51.6	63.2	81.5	96.5	12.2	13.0	
	WTX1800	80°	115°	41.0	22.5	29.0	34.3	41.0	58.0	71.0	91.7	109	12.7	14.2	
	WTX2000	80°		45.6	25.0	32.2	38.1	45.6	64.5	78.9	102	121	13.2	15.0	
	WTX2200	90°		50.1	27.5	35.5	41.9	50.1	70.9	86.8	112	133	13.5	16.0	
WTX2400	90°		54.7	30.0	38.7	45.8	54.7	77.3	94.7	122	145	14.0	17.5		

HOLLOW CONE

Flow Rate (LPM) = $K \sqrt{P \Delta T}$

Spray angle performance varies with pressure. Contact BETE for specific data on critical applications.