

SpiralAir®



1 1/2" SA (Set-up #) - A - 00

High-Flow Air Atomizing

DESIGN FEATURES

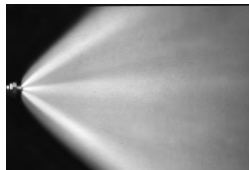
- A two-fluid nozzle using any gas as the atomizing fluid
- Three-stage atomization for highest performance
- Designed for high reliability in extremely hostile environments
- Efficient design reduces compressed air consumption

SPRAY CHARACTERISTICS

- Spray patterns:** Full Cone and Flat Fan
Spray angles: 20°, 60°, 90°
 (Other angles available by special order)
Flow rates: 0.33 to 26 gpm



Narrow Round 20°

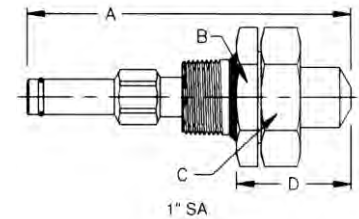


Wide Round 90°

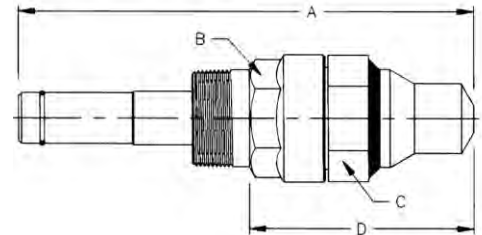


Flat Fan 60°

Dimensions are approximate. Check with BETE for critical dimension applications.

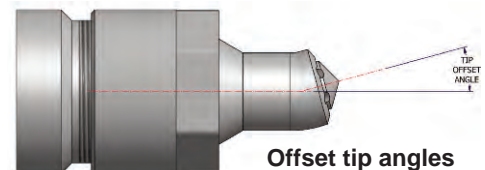
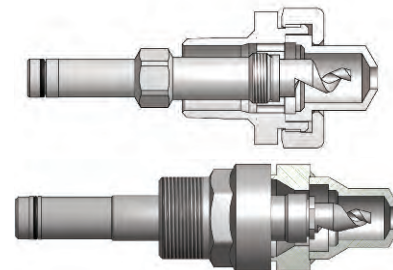


1" SA (Set-up #) - A - 00



1 1/2" SA (Set-up #) - A - 00

Larger sizes and flow rates available upon request.



Offset tip angles available upon request

SpiralAir Spray Set-up, Spiral Tip and Dimensions

Pipe Size	Spray Set-up Number	Spiral Tip No.	Spray Angle	Spray Type	Approx. Free Pass. Dia. (in.)	Dimensions (in.)				Wt. (lbs)	
						A	B	C	D		
1"	SA 101	14	20°	Narrow Round	0.19	1	5.83	2.00	2.00	2.00	1.4
	SA 308		90°	Wide Round	0.106						
	SA 310		60°	Round	0.106						
	SA 402	20	90°	Flat Fan	0.166						
	SA 404		60°		0.166						
	SA 103	20	20°	Narrow Round	0.281						
	SA 307		90°	Wide Round	0.137						
	SA 309		60°	Round	0.137						
SA 401	90°		Flat Fan	0.205							
SA 403	60°			0.205							
1 1/2"	SA 2001	24	20°	Narrow Round	0.365	1 1/2	9.00	2.00	2.19	4.45	3.3
	SA 2008		90°	Wide Round	0.213						
	SA 2012		60°	Round	0.213						
	SA 2100	28	20°	Narrow Round	0.365						
	SA 2300		90°	Wide Round	0.213						
	SA 2301		60°	Round	0.213						

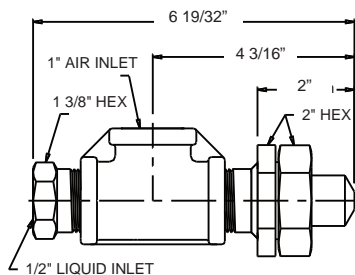
Standard Materials: 316 Stainless Steel with optional Cobalt Alloy 6 wear components.

Spray angle performance varies with pressure. Contact BETE for specific data on critical applications.

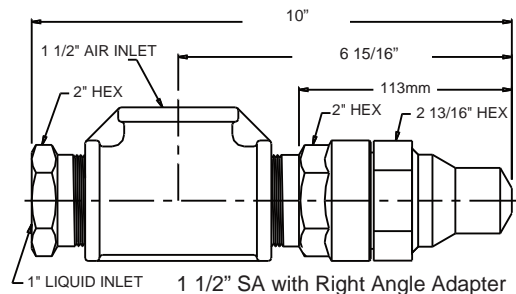
AIR ATOMIZING

TO ORDER: specify pipe size, body style, spray set-up #, hardware and mounting assemblies, and material.

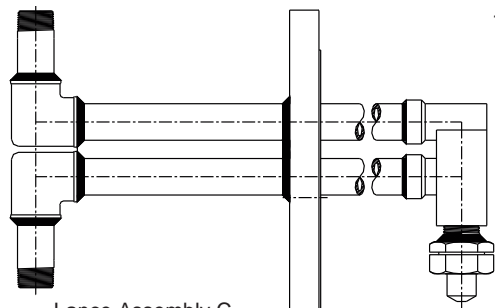
The SpiralAir can be configured to fit any installation requirement. The examples shown are just a few of the custom assemblies available. For more information, contact BETE Applications Engineering.



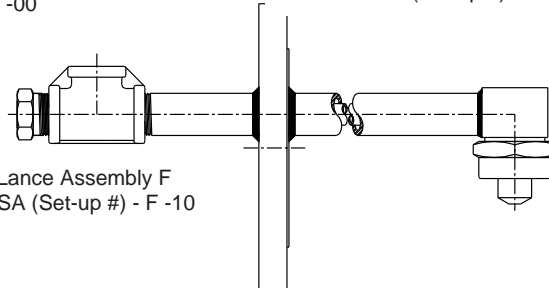
1" SA with Right Angle Adapter
1" SA (Set-up #) - B -00



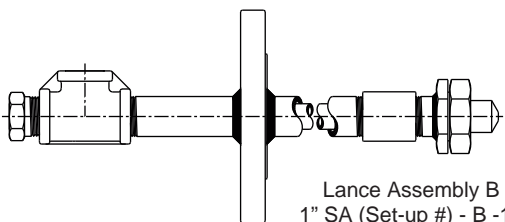
1 1/2" SA with Right Angle Adapter
1 1/2" SA (Set-up #) - B -00



Lance Assembly C
1" SA (Set-up #) - C -10



Lance Assembly F
1" SA (Set-up #) - F -10



Lance Assembly B
1" SA (Set-up #) - B -10

Because very small variations in liquid pressure produce large variations in liquid flow, BETE recommends using a metering pump or other flow metering device to control the liquid flow.

AIR ATOMIZING

Call for the name of your nearest BETE representative.

CALL 413-772-0846

SpiralAir Set-up Flow Rates

Narrow, Wide and Flat Fan Patterns 1" and 1 1/2" Pipe Size

Pipe Size	Spiral Tip Rating	30 PSI Air			40 PSI Air			50 PSI Air			60 PSI Air			70 PSI Air			80 PSI Air			90 PSI Air			100 PSI Air																										
		GPM	PSI liquid	SCFM	GPM	PSI liquid	SCFM	GPM	PSI liquid	SCFM	GPM	PSI liquid	SCFM	GPM	PSI liquid	SCFM	GPM	PSI liquid	SCFM	GPM	PSI liquid	SCFM	GPM	PSI liquid	SCFM																								
1"	14	0.33	26	37	0.33	34	52	0.33	44	68	0.33	53	85	0.33	64	103	0.33	75	121	0.33	86	139	0.33	98	158	0.66	28	24	0.66	37	34	0.66	46	45	0.66	56	56	0.66	67	68	0.66	78	79	0.66	90	92	0.66	102	104
		1.00	30	19	1.00	39	27	1.00	48	35	1.00	58	44	1.00	69	53	1.00	80	62	1.00	92	71	1.00	104	81	1.33	31	16	1.33	40	22	1.33	50	30	1.33	60	37	1.33	71	44	1.33	82	52	1.33	94	60	1.33	106	68
		1.66	32	14	1.66	41	20	1.66	51	26	1.66	61	32	1.66	72	39	1.66	83	45	1.66	95	52	1.66	107	59	2.00	33	12	2.00	42	18	2.00	52	23	2.00	62	29	2.00	73	35	2.00	85	41	2.00	96	47	2.00	109	53
		2.33	34	11	2.33	43	16	2.33	53	21	2.33	63	26	2.33	74	31	2.33	86	37	2.33	98	43	2.33	110	48	2.66	35	10	2.66	44	15	2.66	54	19	2.66	64	24	2.66	75	29	2.66	87	34	2.66	99	39	2.66	111	45
		3.00	35	10	3.00	45	14	3.00	55	18	3.00	65	22	3.00	76	27	3.00	88	32	3.00	100	37	3.00	112	42	1.0	27	38	1.0	34	52	1.0	42	65	1.0	51	79	1.0	59	92	1.0	69	106	1.0	78	120	1.0	88	133
		2.0	29	27	2.0	37	36	2.0	45	45	2.0	54	55	2.0	63	64	2.0	72	74	2.0	82	84	2.0	92	93	3.0	31	22	3.0	39	29	3.0	47	37	3.0	56	45	3.0	65	52	3.0	75	60	3.0	84	68	3.0	94	76
		4.0	33	19	4.0	41	25	4.0	49	32	4.0	58	38	4.0	67	45	4.0	76	52	4.0	86	58	4.0	96	65	5.0	35	17	5.0	42	22	5.0	51	28	5.0	59	34	5.0	69	40	5.0	78	46	5.0	88	52	5.0	98	58
		6.0	35	15	6.0	43	20	6.0	52	26	6.0	61	31	6.0	70	36	6.0	79	42	6.0	89	47	6.0	100	53	7.0	36	14	7.0	44	19	7.0	53	24	7.0	62	29	7.0	71	34	7.0	81	39	7.0	91	44	7.0	101	49
		8.0	37	13	8.0	45	18	8.0	54	22	8.0	63	27	8.0	72	31	8.0	81	36	8.0	92	41	8.0	102	45	9.0	38	12	9.0	46	17	9.0	55	21	9.0	64	25	9.0	73	30	9.0	83	34	9.0	93	38	9.0	103	43
		10	39	12	10	47	16	10	56	20	10	65	24	10	74	28	10	84	32	10	94	36	10	104	41	5.0	39	87	5.0	49	106	5.0	59	127	5.0	68	152	5.0	78	181	5.0	87	213	5.0	95	248			
1 1/2"	24	8.0	42	68	8.0	53	83	8.0	62	101	8.0	72	122	8.0	82	145	8.0	91	173	8.0	91	173	8.0	100	203	11	47	53	11	57	66	11	67	80	11	77	98	11	86	118	11	96	141	11	105	168			
		14	48	30	13	57	42	13	66	55	13	76	70	13	86	86	13	97	103	13	108	121	14	48	28	14	57	39	14	67	52	14	77	66	14	87	81	14	98	97	14	109	114						
		15	49	27	15	58	37	15	67	49	15	77	63	15	88	77	15	98	92	15	109	108	16	50	25	16	59	36	16	68	47	16	78	60	16	88	73	16	99	88	16	110	103						
		17	50	24	17	59	34	17	69	45	17	79	57	17	89	70	17	100	84	17	111	98	18	51	23	18	60	32	18	69	43	18	79	54	18	90	67	18	100	80	18	111	94						
		19	51	22	19	60	31	19	70	41	19	80	52	19	90	64	19	101	77	19	112	90	20	52	21	20	61	30	20	70	40	20	80	50	20	90	62	20	102	74	20	113	87						
		10	46	36	10	54	51	10	64	67	10	73	85	10	84	105	10	94	126	10	105	148	11	46	34	11	55	47	11	65	63	11	74	79	11	85	98	11	95	117	11	106	137						
		12	47	31	12	56	44	12	65	59	12	75	74	12	85	91	12	96	109	12	107	128	13	48	30	13	57	42	13	66	55	13	76	70	13	86	86	13	97	103	13	108	121						
		14	48	28	14	57	39	14	67	52	14	77	66	14	87	81	14	98	97	14	109	114	15	49	27	15	58	37	15	67	49	15	77	63	15	88	77	15	98	92	15	109	108						
		16	50	25	16	59	36	16	68	47	16	78	60	16	88	73	16	99	88	16	110	103	17	50	24	17	59	34	17	69	45	17	79	57	17	89	70	17	100	84	17	111	98						
		18	51	23	18	60	32	18	69	43	18	79	54	18	89	67	18	100	80	18	111	94	19	51	22	19	60	31	19	70	41	19	80	52	19	90	64	19	101	77	19	112	90						
20	52	21	20	61	30	20	70	40	20	80	50	20	90	62	20	102	74	20	113	87	20	52	21	20	61	30	20	70	40	20	80	50	20	90	62	20	102	74	20	113	87								

Standard Materials: 316 Stainless Steel with optional Cobalt Alloy 6 wear components.

Spray angle performance varies with pressure. Contact BETE for specific data on critical applications.