

PSR

Small Physical Size Straight Jet

DESIGN FEATURES

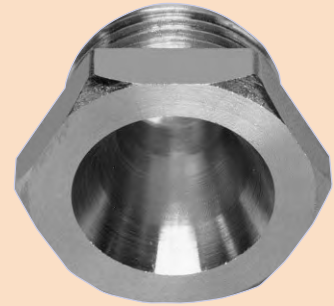
- High velocity jet
- Small physical size
- Small orifice size: 0.014" through 0.125"
- Interchangeable with most other needle type showers

SPRAY CHARACTERISTICS

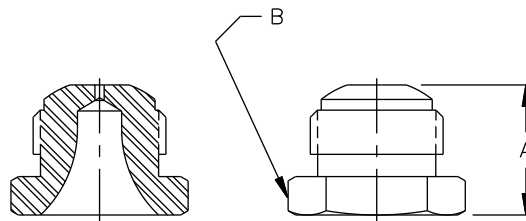
- Hard-driving straight jet
- Flow rates:** 0.028 to 8.21 gpm
Spray angle: 0°

TYPICAL APPLICATIONS

Cleaning, Degreasing,
 Cleaning Wires and Felts—Pulp and Paper



0° Straight Jet



Male

Dimensions are approximate. Check with BETE for critical dimension applications.

PSR Flow Rates and Dimensions Straight Jet 9/16"-24 UNEF Thread

| Nozzle Number | K Factor | GALLONS PER MINUTE @ PSI | | | | | | | | Equivalent Orifice Dia. (in.) | Approx. Dim. (in.) Wt. (oz.) | | |
|---------------|----------|--------------------------|--------------|--------|--------|---------|---------|---------|---------|-------------------------------|------------------------------|------|-----|
| | | 30 PSI | 40 PSI | 50 PSI | 60 PSI | 100 PSI | 200 PSI | 400 PSI | 800 PSI | | A | B | |
| PSR03 | 0.00565 | 0.028 | 0.032 | 0.036 | 0.039 | 0.049 | 0.068 | 0.094 | 0.13 | 0.014 | 0.55 | 0.69 | 0.5 |
| PSR11 | 0.0194 | 0.096 | 0.11 | 0.12 | 0.13 | 0.17 | 0.23 | 0.33 | 0.45 | 0.028 | | | |
| PSR16 | 0.0272 | 0.14 | 0.16 | 0.18 | 0.19 | 0.25 | 0.35 | 0.48 | 0.67 | 0.033 | | | |
| PSR23 | 0.0392 | 0.20 | 0.23 | 0.26 | 0.29 | 0.33 | 0.50 | 0.70 | 0.97 | 0.040 | | | |
| PSR40 | 0.0681 | 0.35 | 0.40 | 0.45 | 0.49 | 0.62 | 0.87 | 1.21 | 1.68 | 0.055 | | | |
| PSR67 | 0.114 | 0.58 | 0.67 | 0.75 | 0.81 | 1.04 | 1.45 | 2.02 | 2.82 | 0.070 | | | |
| PSR120 | 0.204 | 1.05 | 1.20 | 1.34 | 1.46 | 1.86 | 2.60 | 3.62 | 5.05 | 0.094 | | | |
| PSR195 | 0.332 | 1.70 | 1.95 | 2.17 | 2.37 | 3.03 | 4.22 | 5.89 | 8.21 | 0.125 | | | |

$$\text{Flow Rate (GPM)} = K (\text{PSI})^{0.48}$$

Standard Materials: 316 Stainless Steel.

Spray angle performance varies with pressure. Contact BETE for specific data on critical applications.

SPECIAL PURPOSE

TO ORDER: specify pipe size, connection type, nozzle number, and material.