

PSR

Small Physical Size Straight Jet

DESIGN FEATURES

- High velocity jet
- Small physical size
- Small orifice size: 0.035mm through 3.18mm
- **Interchangeable with most other needle-type showers**

SPRAY CHARACTERISTICS

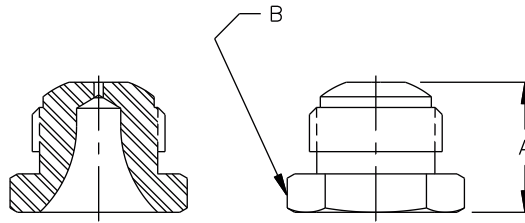
- Hard driving straight jet
- Flow rates:** 0.075 to 34.1 l/min
- Spray angle:** 0°

TYPICAL APPLICATIONS

Cleaning, Degreasing,
Cleaning Wires and Felts—Pulp and Paper



0° Straight Jet



Male

Dimensions are approximate. Check with BETE for critical dimension applications.

PSR Flow Rates and Dimensions Straight Jet, 9/16"-24 UNEF Thread

Nozzle Number	K Factor	LITERS PER MINUTE @ BAR								Equivalent Orifice Dia. (mm)	Approx. Dim. (mm)		Wt. (g)
		1 bar	3 bar	5 bar	7 bar	10 bar	15 bar	30 bar	60 bar		A	B	
PSR03	0.0752	0.075	0.13	0.16	0.19	0.22	0.27	0.37	0.52	0.356	14.0	17.5	21.3
PSR11	0.258	0.26	0.43	0.55	0.65	0.76	0.92	1.28	1.77	0.711			
PSR16	0.393	0.39	0.67	0.85	1.00	1.19	1.44	2.01	2.80	0.838			
PSR23	0.564	0.56	0.96	1.22	1.44	1.70	2.07	2.89	4.03	1.02			
PSR40	0.981	0.98	1.66	2.12	2.50	2.96	3.60	5.02	7.00	1.40			
PSR67	1.644	1.64	2.79	3.56	4.18	4.96	6.03	8.41	11.7	1.78			
PSR120	2.944	2.94	4.99	6.37	7.49	8.89	10.8	15.1	21.0	2.39			
PSR195	4.784	4.78	8.11	10.4	12.2	14.4	17.6	24.5	34.1	3.18			

$$\text{Flow Rate (l/min)} = K (\text{bar})^{0.48}$$

Standard Materials: 316 Stainless Steel.

SPECIAL PURPOSE

TO ORDER: specify pipe size, connection type, nozzle number, and material.