

HydroWhirl® Poseidon®



Tank Washing - PTFE Spray Nozzle

DESIGN FEATURES

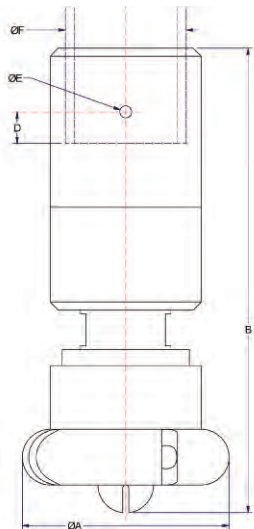
- Cleans more quickly and uses less water, spray media, or fluid and lower pressure than static tank washers
- PTFE construction:
 - Ideal for harsh chemical environments
 - Corrosion resistant
- Available in threaded, pipe, tube, or DIN clip-on connections
- Made from FDA compliant materials for use in Clean-In-Place (CIP) applications

SPRAY CHARACTERISTICS

- Slow spinning produces longer spray dwell time on the target surface, increasing impact over conventional rotating designs
- Complete 360° omnidirectional spray pattern, other spray angels available upon request

Flow rates: 4.45 to 82.4 gpm

TANK WASHING



STANDARD CONNECTION SIZES

Connection Type	Nozzle Number											
	HWP-10			HWP-23 HWP-28			HWP-32 HWP-37			HWP-48 HWP-55 HWP-65 HWP-73		
FNPT/BSP	1/4"	3/8"	1/2"	3/8"	1/2"	3/4"	1/2"	3/4"	1"	1"	1-1/4"	1-1/2"
Pipe Clip-On							X					
Dim F (in)	0.54	0.68	0.84	0.68	0.84	1.05	0.84	1.05	1.32	1.32	1.66	1.90
Tube Clip-On	1/2"	3/4"	3/4"	3/4"	1"	1"	1"	1-1/4"	1-1/4"	1-1/2"	1-3/4"	1-3/4"
Dim F (in)	0.50	0.75	0.75	0.75	1.00	1.00	1.00	1.25	1.25	1.50	1.75	1.75
DIN Clip On**	DN10	DN15	DN15	DN15	DN20	DN20	DN20	DN25	DN25	DN25	DN40	DN40
Dim F (mm)	13	19	19	19	23	23	23	29	29	29	41	41

HydroWhirl Poseidon Nozzle Flow Rates* and Dimensions

Nozzle Number	Spray Angle	GALLONS PER MINUTE @PSI						Dimensions (in)				Wt (oz)	Coverage Diameter (ft) @40PSI
		10 psi	20 psi	30 psi	40 psi	50 psi	60 psi	A	B	D MAX	E		
HWP-10	360°	4.45	6.31	7.75	8.96	10.0	11.0	1.68	3.94	0.50	0.09	3	9
HWP-23		9.42	13.4	16.5	19.0	21.3	23.4	1.95	4.12	0.50	0.16	4	11
HWP-28		10.7	15.2	18.6	21.5	24.0	26.3						14
HWP-32		11.7	16.8	20.8	24.1	27.1	29.8	3.00	6.40	0.50	0.19	21	14
HWP-37		15.1	21.6	26.5	30.8	34.5	37.9						16
HWP-48		20.6	29.3	36.0	41.7	46.8	51.3	3.30	7.30	0.50	0.19	29	24
HWP-55		23.5	33.4	41.1	47.6	53.3	58.5						25
HWP-65		30.7	43.4	53.3	61.6	68.9	75.5						
HWP-73		33.4	47.4	58.2	67.2	75.2	82.4						

Standard Materials: Nozzle: PTFE; Retaining Clip: 316 stainless steel

*Flow rates represent threaded connections with a 360° spray angle. Flow rates may vary for other connection types and spray angles, please contact BETE for more information.

**Per DIN 11866 Part A / DIN 11850 Part B

www.BETE.com

TO ORDER: specify pipe size, connection type, nozzle number, spray angle, and material.