

HydroWhirl® Poseidon®



Tank Washing - PTFE Spray Nozzle

DESIGN FEATURES

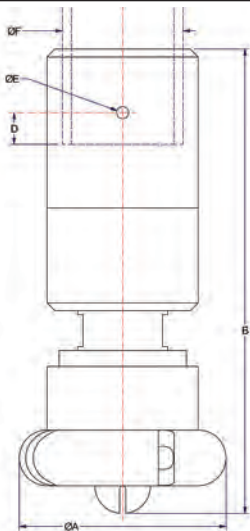
- Cleans more quickly and uses less water and lower pressure than static tank washers
- PTFE construction:
 - Ideal for harsh chemical environments
 - Corrosion resistant
- Available in threaded, pipe, tube, or DIN clip-on connections
- Made from FDA compliant materials for use in Clean-In-Place (CIP) applications.

SPRAY CHARACTERISTICS

- Slow spinning produces longer spray dwell time on the target surface, increasing impact over conventional rotating designs
- Complete 360° omnidirectional spray pattern, other spray angles available upon request

Flow rates: 14.3 to 307 L/min

TANK WASHING



STANDARD CONNECTION SIZES

Connection Type	Nozzle Number											
	HWP-10			HWP-23 HWP-28			HWP-32 HWP-37			HWP-48 HWP-55 HWP-65 HWP-73		
FNPT/BSP	1/4"	3/8"	1/2"	3/8"	1/2"	3/4"	1/2"	3/4"	1"	1"	1-1/4"	1-1/2"
Pipe Clip-On							X					
Dim F (mm)	13.7	17.3	21.3	17.3	21.3	26.7	21.3	26.7	33.5	33.5	42.2	48.3
Tube Clip-On	1/2"	3/4"	3/4"	1"	1"	1"	1-1/4"	1-1/2"	1-3/4"			
Dim F (mm)	12.7	19.1	19.1	25.4	25.4	25.4	31.8	38.1	44.5			
DIN Clip On**	DN10	DN15	DN15	DN20	DN20	DN20	DN25	DN25	DN40			
Dim F (mm)	13	19	19	23	23	23	29	29	41			

HydroWhirl Poseidon Nozzle Flow Rates* and Dimensions

Nozzle Number	Spray Angle	LITERS PER MINUTE @BAR						Dimensions (mm)				Mass (g)	Coverage Diameter (m) @2.8 bar
		0.5 bar	1 bar	1.5 bar	2 bar	3 bar	4 bar	A	B	D MAX	E		
HWP-10	360°	14.3	20.3	24.9	28.8	35.4	40.9	42.7	100.1	12.7	2.4	85.0	2.7
HWP-23		30.3	43.1	52.9	61.2	75.2	87.0	49.5	104.6	12.7	4.1	113	3.4
HWP-28		34.6	49.0	60.0	69.3	84.9	98.0	49.5	104.6	12.7	4.1	113	4.3
HWP-32		37.5	53.8	66.5	77.2	95.4	111	76.2	162.6	12.7	4.8	595	4.3
HWP-37		48.5	69.2	85.2	98.7	122	141	76.2	162.6	12.7	4.8	595	4.9
HWP-48		66.0	94.0	116	134	165	191	83.8	185.4	12.7	4.8	822	7.3
HWP-55		75.4	107	132	153	188	218						7.6
HWP-65		98.7	140	171	198	243	281						
HWP-73		108	153	187	216	265	307						

Standard Materials: Nozzle: PTFE; Retaining Clip: 316 stainless steel

*Flow rates represent threaded connections with a 360° spray angle. Flow rates may vary for other connection types and spray angles, please contact BETE for more information.

**Per DIN 11866 Part A / DIN 11850 Part B

www.BETE.com

TO ORDER: specify pipe size, connection type, nozzle number, spray angle, and material.