

# HydroWhirl® Poseidon



(HWP) PTFE Reactionary Force



## DESIGN FEATURES

- Fluid-driven, self-lubricating
- PTFE material is corrosion-resistant and ideal for harsh chemical environments
- Cleaning coverage for medium to large tanks

## SPRAY CHARACTERISTICS

- Slow spinning produces longer spray dwell time on the target surface, increasing impact over conventional rotating designs

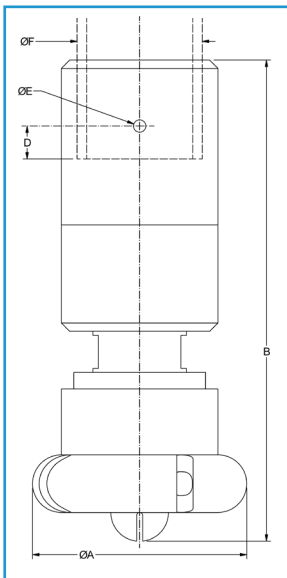
**Spray Angles:** Complete 360° spray, other spray angle patterns available upon request.

**Flow Rates:** 4.25 to 82.4 GPM

**Max Temperature:** 200°F/93°C

**Filtration:** Line strainer with a mesh size of 0.002 in/325 mesh

## DIMENSIONS IN INCHES



Nozzle Number	Female Connection Size	A	B	D	E	F (Pipe)	F (Tube)	F (DN)	Weight (oz)
HWP-10	1/4" FNPT, BSP, Pipe Clip-On, DN10	1.68	3.94	0.50	0.09	0.54		0.51	3
	3/8" FNPT, BSP, Pipe Clip-On, DN15					0.68		0.75	
	1/2" FNPT, BSP, Pipe/Tube Clip-On, DN15					0.84	0.50	0.75	
	3/4" Tube Clip-On						0.75		
HWP-23 HWP-28	3/8" FNPT, BSP, Pipe Clip-On, DN15	1.95	4.12	0.50	0.16	0.68		0.75	4
	1/2" FNPT, BSP, Pipe Clip-On, DN20					0.84		0.91	
	3/4" FNPT, BSP, Pipe/Tube Clip-On, DN20					1.05	0.75	0.91	
	1" Tube Clip-On						1.00		
HWP-32 HWP-37	1/2" FNPT, BSP, DN20	3.00	6.40	0.50	0.19	0.84		0.91	21
	3/4" FNPT, BSP, Pipe Clip-On, DN25					1.05		1.14	
	1" FNPT, BSP, Pipe/Tube Clip-On, DN25					1.32	1.00	1.14	
	1 1/4" Tube Clip-On						1.25		
HWP-48 HWP-55 HWP-65 HWP-73	1" FNPT, BSP, Pipe Clip-On, DN40	3.30	7.30	0.50	0.19	1.32		1.61	29
	1 1/4" FNPT, BSP, Pipe Clip-On, DN40					1.66		1.61	
	1 1/2" FNPT, BSP, Pipe/Tube Clip-On, DN40					1.90	1.50	1.61	
	1 3/4" Tube Clip-On						1.75		

TANK CLEANING

## HYDROWHIRL® POSEIDON® FLOW RATES

Materials: PTFE Body, 316 Stainless Steel Retaining Clip

Female Connection Type	Nozzle Number	Spray Angles	Flow Rate (GPM) @ Differential Pressure (psi)						Maximum Free Passage	Coverage Dia @ 40 psi				
			10	20	30	40	50	60						
			psi	psi	psi	psi	psi	psi						
1/4" FNPT, BSP, Pipe Clip-On, DN10 3/8" FNPT, BSP, Pipe Clip-On, DN15 1/2" FNPT, BSP, Pipe/Tube Clip-On, DN15 3/4" Tube Clip-On	HWP-10	360°	4.25	6.31	7.75	8.96	10.0	11.0	0.06	9				
3/8" FNPT, BSP, Pipe Clip-On, DN15 1/2" FNPT, BSP, Pipe Clip-On, DN20 3/4" FNPT, BSP, Pipe/Tube Clip-On, DN20 1" Tube Clip-On			HWP-23 HWP-28	360°	9.42	13.4	16.5	19.0			21.3	23.4	0.06	11
10.7					15.2	18.6	21.5	24.0			26.3	14		
1/2" FNPT, BSP, DN20 3/4" FNPT, BSP, Pipe Clip-On, DN25 1" FNPT, BSP, Pipe/Tube Clip-On, DN25 1 1/4" Tube Clip-On			HWP-32 HWP-37	360°	11.7	16.8	20.8	24.1			27.1		29.8	0.06
15.1	21.6	26.5			30.8	34.5	37.9	16						
1" FNPT, BSP, Pipe Clip-On, DN40 1 1/4" FNPT, BSP, Pipe Clip-On, DN40 1 1/2" FNPT, BSP, Pipe/Tube Clip-On, DN40 1 3/4" Tube Clip-On	HWP-48 HWP-55 HWP-65 HWP-73	360°	20.6	29.3	36.0	41.7	46.8		51.3	0.06	24			
23.5			33.4	41.1	47.6	53.3	58.5	0.09	25					
30.7			43.4	53.3	61.6	68.9	75.5							
33.4			47.4	58.2	67.2	75.2	82.4							

Flow rates represent threaded connections with a 360° spray angle.

Flow rates may vary for other connection types and spray angles.